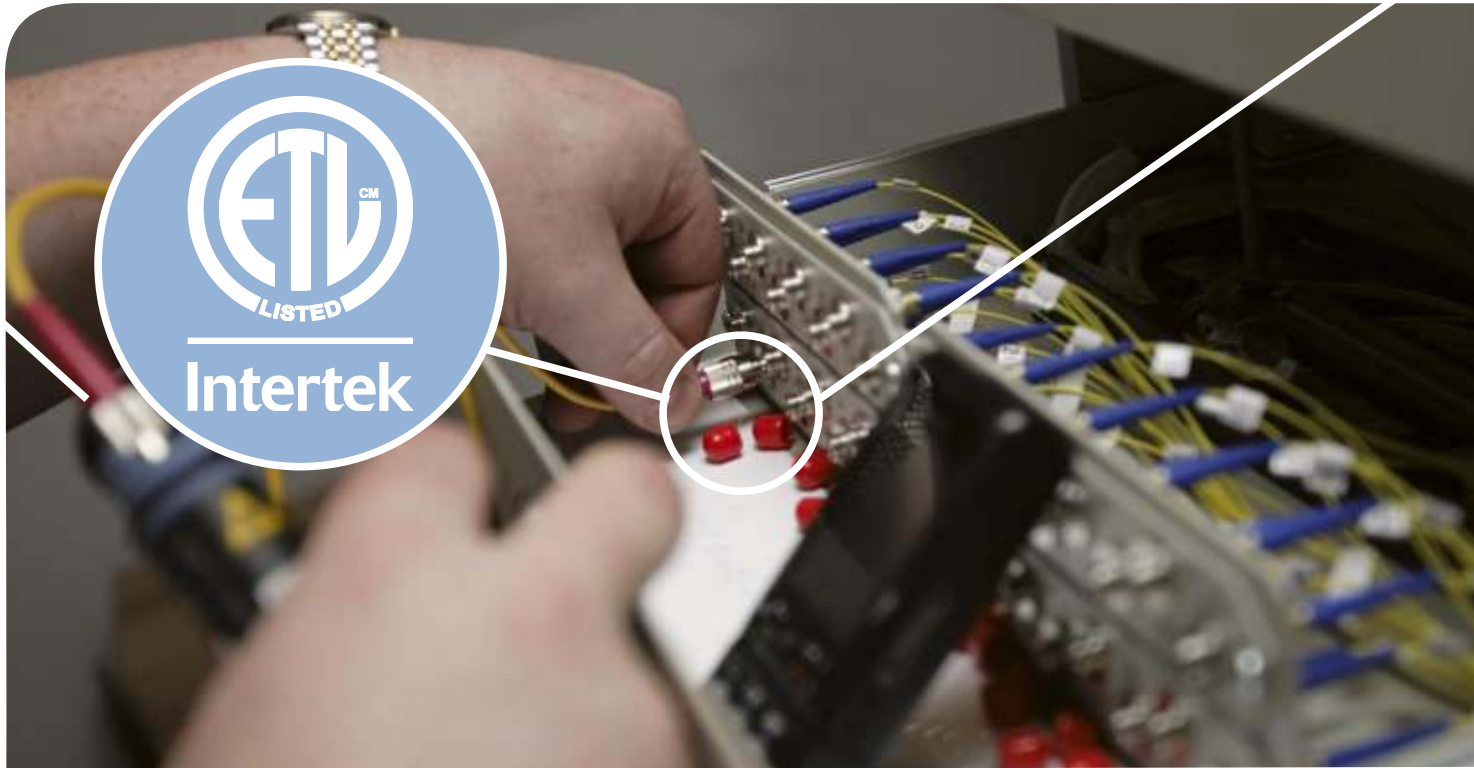


ETL Listed Mark

North America Product Safety Certification



Valued Quality. Delivered.



Through faster product certification and market access, Intertek's proprietary ETL Mark has become the fastest growing electrical safety Certification Mark in North America. With more than 80,000 product listings and millions of products sold across North America each year, we've nearly tripled the number of ETL Listed products in less than 10 years.

The ETL Mark from Intertek is making conformity assessment more flexible and accommodating so that our clients no longer see product safety testing as strictly an obligation, but as a process that can add value to product development cycles.

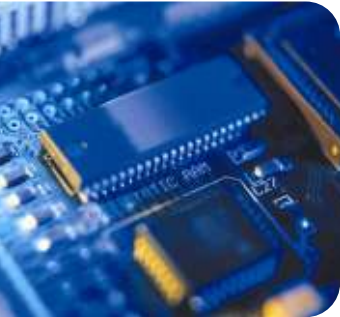
Intertek is a Nationally Recognized Testing Laboratory (NRTL) staffed by a global force of engineers performing the same testing, listing, labeling, and follow-up inspection services as other providers. We are accredited by national organizations, agencies and regulatory bodies, including OSHA, to evaluate and list products in accordance with electrical safety standards.

Accreditations to Hit the Mark

- OSHA regulations require that all product testing, evaluation and listing services be performed by an accredited NRTL – a recognition that Intertek has held since 1989.
- Intertek's ETL Listed Mark will increase your competitive edge and set your product on the path towards achieving greater profitability.



Valued Quality. Delivered.



What is an NRTL?

A Nationally Recognized Testing Laboratory (NRTL) is an independent laboratory recognized by the Occupational Safety and Health Administration (OSHA) to test products to the specifications of applicable product safety standards. An NRTL's function is to provide independent evaluation, testing, and certification of any electrically operated or gas- and oil-fired product.

What is the difference between Certification Marks?

Certification Marks demonstrate that the product that bears it has met the requirements of widely-accepted product safety standards as determined through the independent testing of an OSHA-recognized NRTL. As part of that testing regimen, the product manufacturer has agreed to periodic follow-up inspections to verify continued compliance.

The only real difference between the Marks is in the service of the testing laboratory behind them. Intertek's ETL Listed Mark delivers speed to market, increased revenue potential, and flexibility in testing to deliver a more efficient approach to safety certification.

Benefits of the ETL Listed Mark

- **Speed to Market** - *The timeframe in which products are tested and ETL-certified is the fastest on the market.*
- **Increased Revenue** - *We bring your products to market faster than our competitors to maximize revenue potential and market share.*
- **Flexibility and Efficiency** - *Our combined services offer you multiple testing options. In addition to the ETL Listed Mark, we provide the ETL Sanitation, ETL Field Evaluation and many other proprietary Marks such as the Green Leaf and Quality and Performance Mark (QPM).*

Not Just a Testing Lab – A Testing Partner

Our experienced testing experts bring insight and greater efficiency to the testing process because we understand your products and market objectives. Intertek is an active participant in many industry organizations and committees, including the International Association of Electrical Inspectors (IAEI), to ensure our continued knowledge of ever-changing testing standards and industry-specific requirements.

We answer directly to your needs and schedules across our global network of more than 1,000 offices and state-of-the-art laboratories to offer fast, flexible testing no matter where you are located. Bring your products to market more quickly, smoothly and cost effectively than ever before when you partner Intertek.



Intertek

545 E. Algonquin Road
Suite F
Arlington Heights, IL
60005

www.intertek.com

CV006_0213

For more information please visit www.intertek.com/ETL, contact us at icenter@intertek.com, or call us at 1-800-WORLDCON (967-5352).

To find an office or laboratory in a particular country, please visit www.intertek.com/contact.